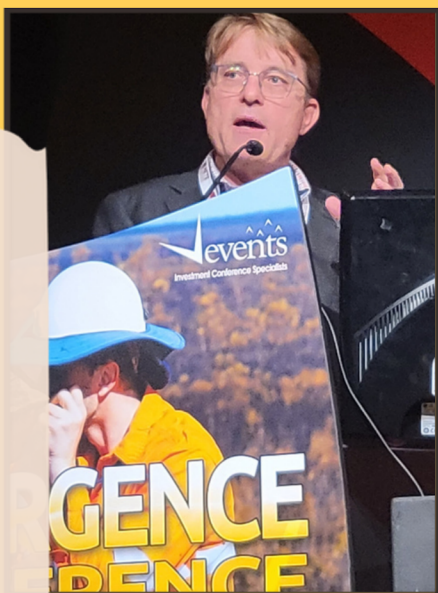


Whim Creek NEWS LETTER

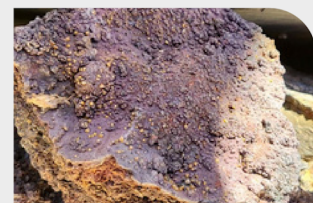
Dec 2022, / Vol 2

ANX OUT AND ABOUT

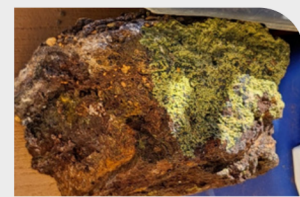
Anax took part in the recent **RIU Resurgence Conference** held at the Westin Hotel in Perth on 23rd and 24th November, where **Geoff Laing** presented an update on the progress of the Whim Creek Project. Anax also attended the IMARC conference in Sydney from 2nd to 4th November, interacting with other miners, technical service providers and regulators. Automation and big data were the key topics at the conference, both being the result of reducing the carbon footprint of mining.



Anax invited the **Mineralogical Society** to visit the Whim Creek mine site to collect mineral specimens on Saturday 26th November. A group of 12 MinSoc members were able to make the trip where they collected some spectacular malachite and gossan samples from around the Whim Creek pit. The Mineralogical Society members are very knowledgeable and identified a number of unusual minerals in the mine site collections as suitable for display.



Wulfenite crystals (yellow)



Pyromorphite crystals (green)

Anax then joined the **MinSoc visit to Azure Minerals' Andover Project in the Pilbara**, to learn about the complex intrusive rocks relating to the Andover Nickel - Cobalt Project. Anax thanks Azure for the opportunity to see the project geology first-hand and for demonstrating excellent social awareness.

Anax sponsored and attended the **Perth Gem and Mineral Show at Curtin University Stadium from 14th to 16th October**. This event is proving very popular, with 8,000 attendees in 2022, the show's second year. The Anax rock quiz for kids was won by 10-year-old Billie Hardy. Well done Billy and thanks for having a go!



APPROVALS AND ENVIRONMENTAL

Anax has achieved a major project milestone for the Whim Creek Copper Project with the approval of the Mons Cupri Mining Proposal by the Department of Mines, Industry Regulation and Safety (DMIRS) after a rigorous assessment process. Significant environmental and geotechnical studies were undertaken in support of the Mining Proposal and to help guide the impact assessment.

The Mining Proposal allows for the following activities:

- Mining of Mons Cupri Sulphide
- Pit Extension of the existing Mons Cupri waste rock disposal area
- Establishment of a 120-man accommodation camp at Whim Creek
- Installation of wastewater treatment plant and landfill to support operations

Anax is also pleased to **announce that the Department of Water and Environmental Regulation (DWER) has granted a Works Approval under the Environmental Protection Act 1986 for the Whim Creek Copper Project.** The Works Approval builds on the work already completed under the Environmental Protection Notice and supports the operations approved under the Mining Proposal.

The approval of the Mining Proposal and the granting of the Works Approval allows the commencement of mining from the Mons Cupri pit and the processing of ore through the upgraded crushing plant. The Anax team has worked diligently to detail the identification and management of the environmental impacts of the project and liaised with local stakeholders. The Mons Cupri open pit is the first mine the Company proposes to operate in the resumption of the Whim Creek Copper Project.



SITE UPDATE

Operations at the site continue under Care and Maintenance with regular Environmental Monitoring of Groundwater, Flora and Stygofauna ongoing.